



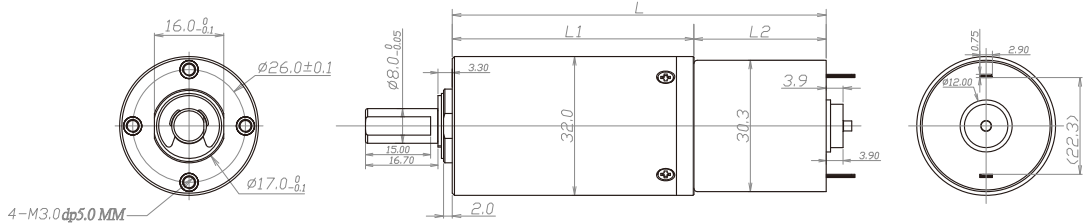
# ZWBPD032032

## Gearbox specifications

Outer diameter	32mm	Bearing	Porous bearing	Rolling bearing
Material	Plastic	Axial endplay	≤0.1mm	≤0.1mm
Direction of rotation	cw & ccw	Radial loading on output shaft	≤50N	≤100N
Gear backlash	≤3° (Customisable)	Operating temperature range	-20~ +100°C	

Gearbox stages	1	2	3	4
Reduction ratio	4 / 6	16 / 24 / 33	67 / 94 / 133 / 188	272 / 383 / 540 / 763 / 1076
Max rated torque of gearbox (gf.cm)	30000	30000	30000	30000
Instant torque of gearbox (gf.cm)	80000	80000	80000	80000
Gearbox efficiency	85	73	65	58
Length L1 (mm)	25.7	35.7	45.7	55.7

## Technical illustrations



## Motor specifications

Motors	DC brush motor, Stepper motor, Brushless motor	Input speed	≤15000rpm
Voltage(Optional)	3-24V	Current	300mA max

Reference data (motor definition value): 24v 7700rpm The following table is tested according to the motor definition value, the data is only for reference

Model	Rated Speed	Max Speed	Max Rated Torque	Max Instant Torque	Reduction ratio	Length L1	Overall Length
	rpm	rpm	gf.cm	gf.cm			
ZWBPD032032-4	1875	7500	30000	80000	4	25.7	68.2
ZWBPD032032-6	1250	5000	30000	80000	6		
ZWBPD032032-16	469	1875	30000	80000	16	35.7	78.2
ZWBPD032032-24	313	1250	30000	80000	24		
ZWBPD032032-33	227	909	30000	80000	33		
ZWBPD032032-67	112	448	30000	80000	67	45.7	88.2
ZWBPD032032-94	80	319	30000	80000	94		
ZWBPD032032-133	56	226	30000	80000	133		
ZWBPD032032-188	40	160	30000	80000	188		
ZWBPD032032-272	28	110	30000	80000	272	55.7	98.2
ZWBPD032032-383	20	78	30000	80000	383		
ZWBPD032032-540	14	56	30000	80000	540		
ZWBPD032032-763	10	39	30000	80000	763		
ZWBPD032032-1076	7	28	30000	80000	1076		

Please contact us for customized products: [contact@zw-drive.com](mailto:contact@zw-drive.com)